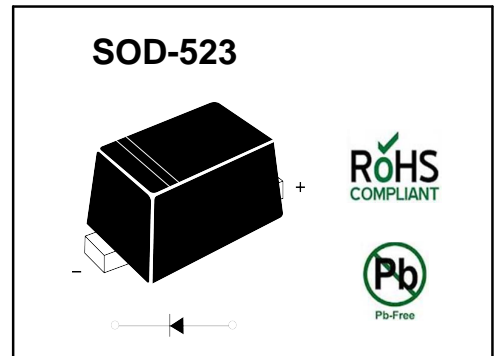


### PINNING

## Silicon Epitaxial Planar Switching Diode

Fast Switching Diode

PIN	DESCRIPTION
1	Cathode
2	Anode



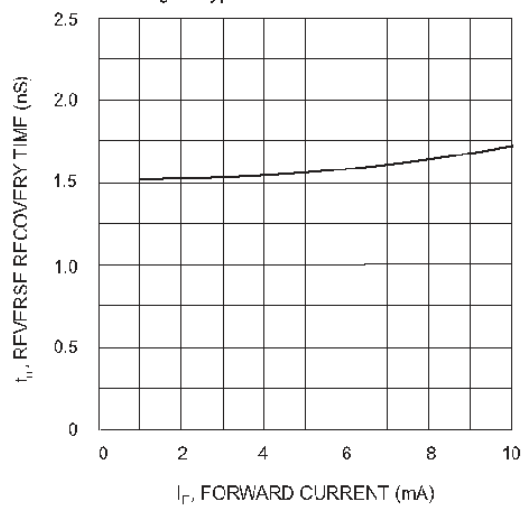
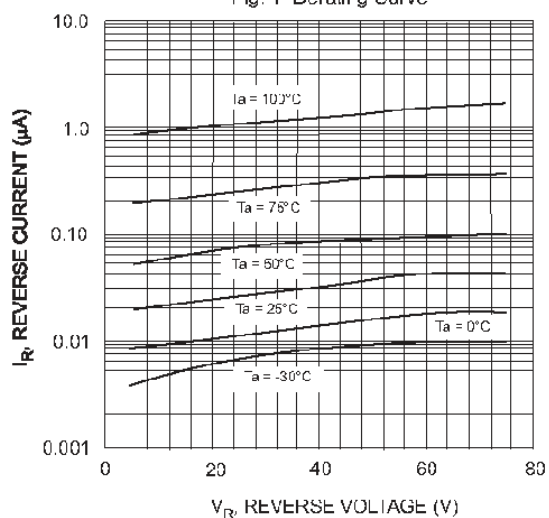
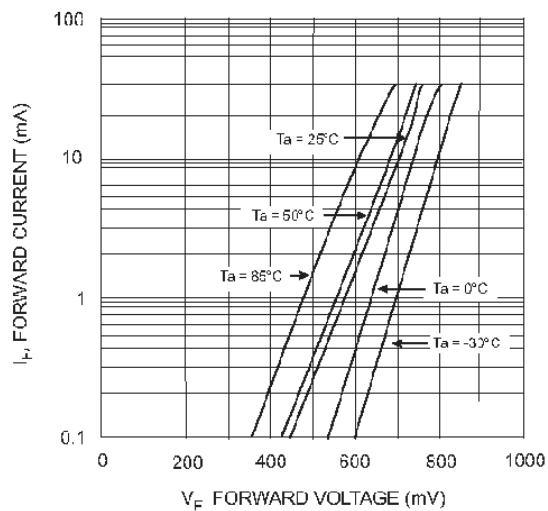
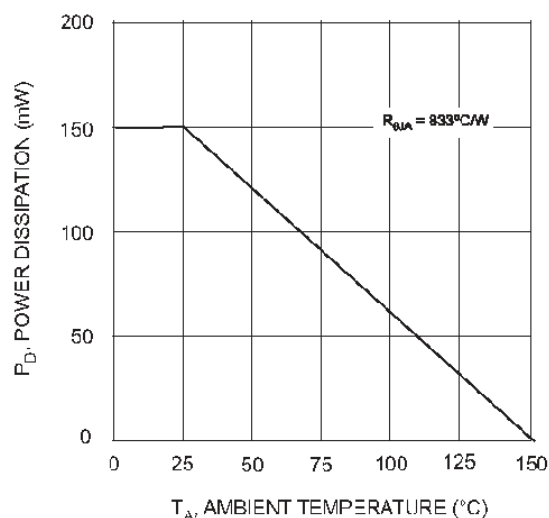
### Absolute Maximum Ratings ( $T_a = 25^\circ\text{C}$ )

Parameter	Symbol	Value	Unit
Peak Reverse Voltage	$V_{RM}$	100	V
Reverse Voltage	$V_R$	80	V
Average Rectified Forward Current	$I_{F(AV)}$	125	mA
Forward Continuous Current	$I_{FM}$	250	mA
Non-Repetitive Peak Forward Surge Current (at $t = 1\ \mu\text{s}$ )	$I_{FSM}$	0.5	A
Power Dissipation	$P_d$	150	mW
Junction Temperature	$T_j$	150	$^\circ\text{C}$
Storage Temperature Range	$T_{stg}$	- 65 to + 150	$^\circ\text{C}$

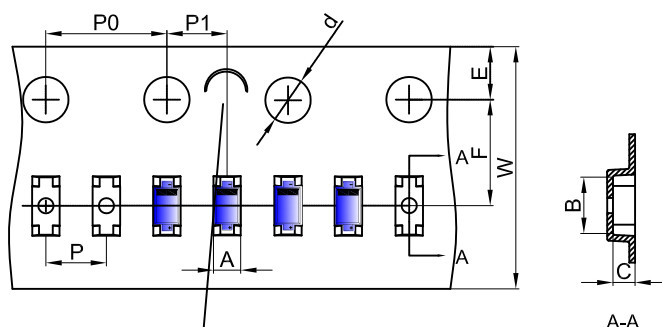
### Characteristics at $T_a = 25^\circ\text{C}$

Parameter	Symbol	Min.	Max.	Unit
Forward Voltage at $I_F = 5\ \text{mA}$ at $I_F = 10\ \text{mA}$ at $I_F = 100\ \text{mA}$ at $I_F = 150\ \text{mA}$	$V_F$	0.62 - - -	0.72 0.855 1 1.25	V
Reverse Leakage Current at $V_R = 80\ \text{V}$ at $V_R = 20\ \text{V}$ at $V_R = 75\ \text{V}$ , $T_J = 150^\circ\text{C}$ at $V_R = 25\ \text{V}$ , $T_J = 150^\circ\text{C}$	$I_R$	- - - -	100 25 50 30	nA nA $\mu\text{A}$ $\mu\text{A}$
Reverse Breakdown Voltage at $I_R = 100\ \mu\text{A}$	$V_{(BR)R}$	80	-	V
Capacitance at $V_R = 0.5\ \text{V}$ , $f = 1\ \text{MHz}$	$C_{tot}$	-	4	pF
Reverse Recovery Time at $I_F = I_R = 10\ \text{mA}$ , $I_{rr} = 0.1 \times I_R$ , $R_L = 100\ \Omega$	$t_{rr}$	-	4	ns

## Typical Characteristics



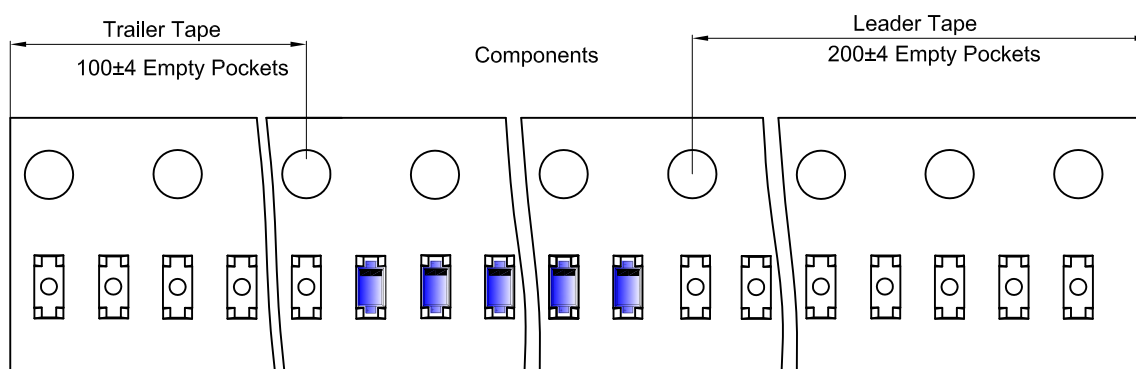
### SOD-523 Embossed Carrier Tape



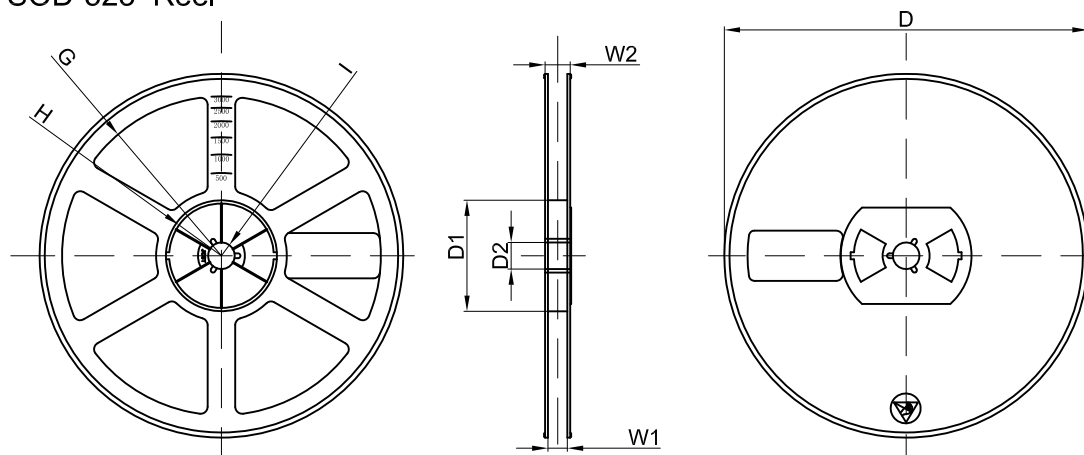
NOTE: TO CAVE 'C' ON CARRIER TAPE PER 120MM

Dimensions are in millimeter										
Pkg type	A	B	C	d	E	F	P0	P	P1	W
SOD-523	0.9	1.94	0.73	Ø1.50	1.75	3.50	4.00	2.00	2.00	8.00

### SOD-523 Tape Leader and Trailer



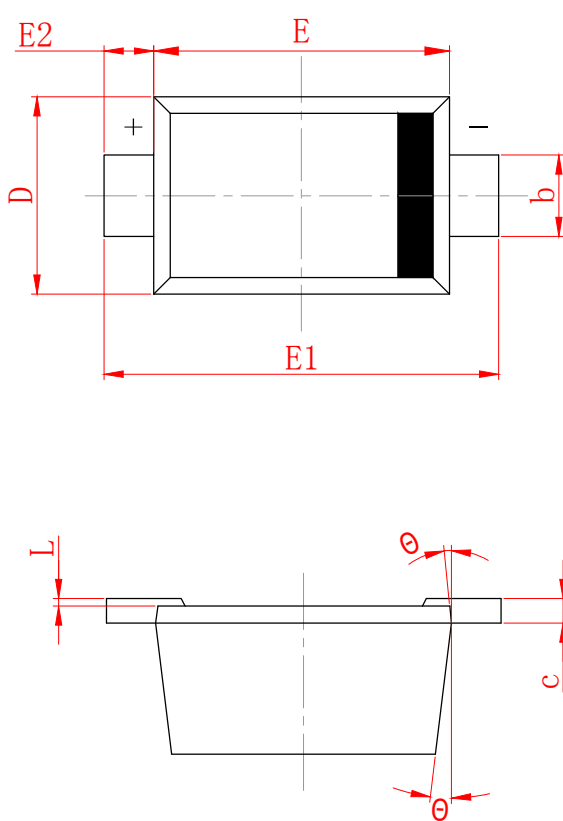
### SOD-523 Reel



Dimensions are in millimeter								
Reel Option	D	D1	D2	G	H	I	W1	W2
7" Dia	Ø178.00	54.40	13.00	R78.00	R25.60	R6.50	9.50	12.30

REEL	Reel Size	Box	Box Size(mm)	Carton	Carton Size(mm)	G.W.(kg)
8000 pcs	7 inch	120,000 pcs	203×203×195	480,000 pcs	438×438×220	

### SOD-523 Package Outline Dimensions



SYMBOL	MILLIMETER	
	MIN	MAX
A	0.530	0.730
A1	0.500	0.700
b	0.280	0.380
c	0.080	0.150
D	0.750	0.850
E	1.100	1.300
E1	1.500	1.700
E2	0.200 REF	
L	0.010	0.070
$\theta$	7° REF	

### DISCLAIMER

JHG PROVIDES TECHNICAL AND RELIABILITY DATA (INCLUDING DATASHEETS), DESIGN RESOURCES (INCLUDING REFERENCE DESIGNS), APPLICATION OR OTHER DESIGN ADVICE, SAFETY INFORMATION, AND OTHER RESOURCES "AS IS" AND WITH ALL FAULTS, AND DISCLAIMS ALL WARRANTIES, EXPRESS AND IMPLIED, INCLUDING WITHOUT LIMITATION ANY IMPLIED WARRANTIES OF MERCHANTABILITY, FITNESS FOR A PARTICULAR PURPOSE OR NON-INFRINGEMENT OF THIRD PARTY INTELLECTUAL PROPERTY RIGHTS.

These resources are intended for skilled developers designing with JHG products. You are solely responsible for

- (1) selecting the appropriate JHG products for your application;
- (2) designing, validating and testing your application;
- (3) ensuring your application meets applicable standards, and any other safety, security, or other requirements.

These resources are subject to change without notice. JHG grants you permission to use these resources only for development of an application that uses the JHG products described in the resource. Other reproduction and display of these resources are prohibited. No license is granted to any other JHG intellectual property right or to any third party intellectual property right. JHG disclaims responsibility for, and you will fully indemnify JHG and its representatives against, any claims, damages, costs, losses, and liabilities arising out of your use of these resources.